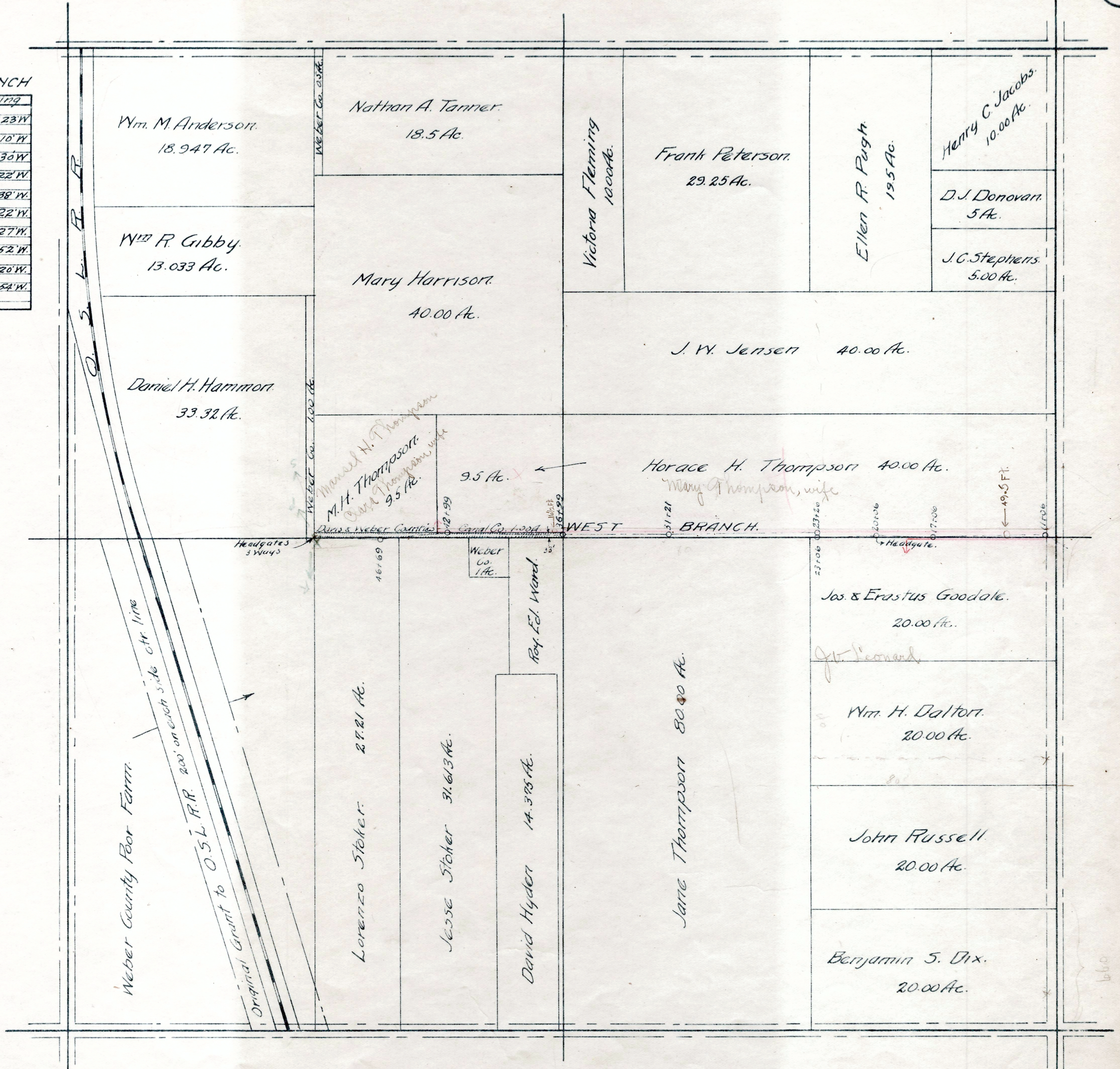


WEST BRANCH

Station	Bearing
9+70	N. 60° 23' W
11+06	S. 89° 10' W
17+06	S. 89° 30' W
20+06	S. 89° 22' W
23+06	N. 00° 38' W
23+26	S. 89° 22' W
31+21	S. 89° 27' W
36+99	N. 88° 52' W
42+99	S. 85° 20' W
46+69	S. 88° 54' W
50+13	



SECTION 14 - T.5 N. R.2W. S.L.M.